



Mandarin Hotel, Las Vegas, NV



Introducing an innovative approach to factory assembled modular steel storefront systems. StileLine ~ the world's premier hollow metal steel storefront system. Modules stack together for lightening fast installation, with no visible screws, clips or fasteners.

### Features

- L O N G Span Capability
- Integrated Structural Members
- Cold Rolled, A60, Stainless or Bronze
- Modular Design
- Narrow Sight Lines
- FAST Installation
- Interior or Exterior Applications

### Glass

- Allowance for 1/4" to 1" Glass

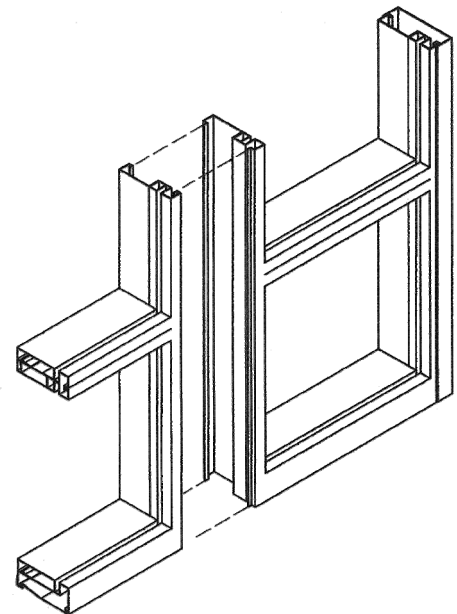
### Finishing

- Factory Finishing Available

For complete details and specifications, please consult online catalog at: [www.stilesdoor.com](http://www.stilesdoor.com)

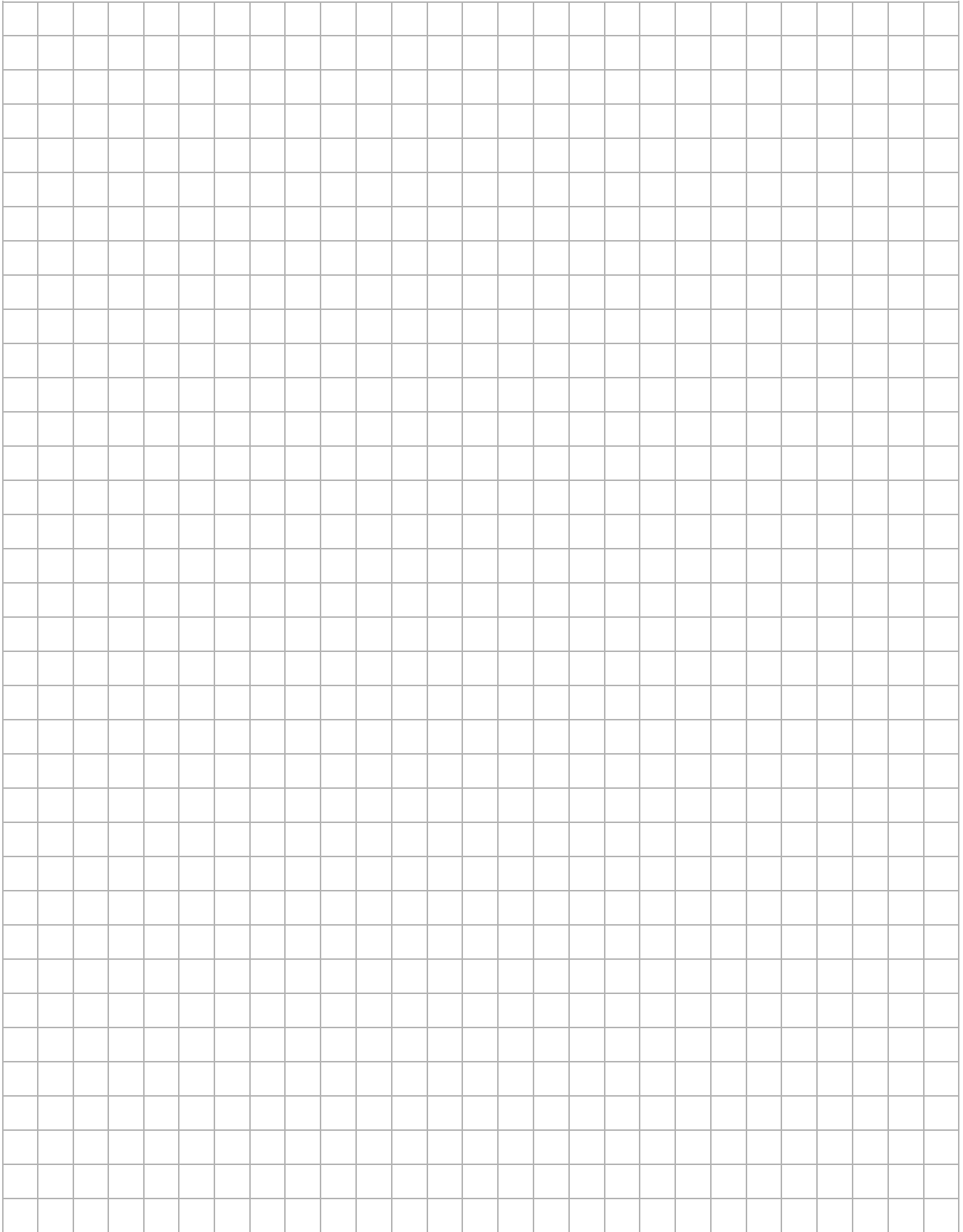
### Section Contents

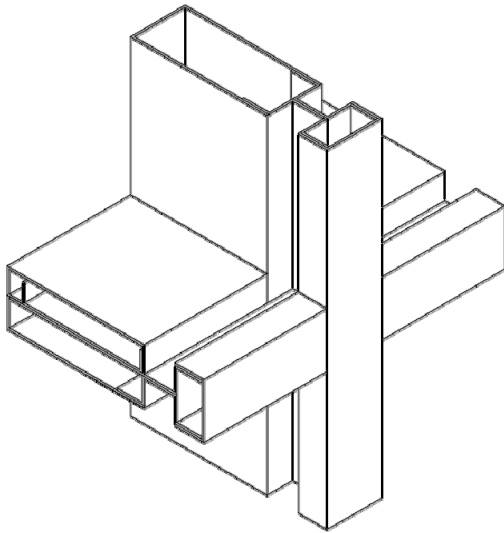
Tuck Glazed System	SF-1.0
Flush Glazed System	SF-2.0
Structural Glazed System	SF-3.0
Pressure Glazed System	SF-4.0
Operable Vents	SF-5.0
Entrances	SF-6.0 to 6.2



## Built to Order.™

## Notes





## Features

- LONG Span Capability
- Integrated Structural Members
- Cold Rolled, A60, Stainless or Bronze
- Modular Design
- Narrow Sight Lines
- FAST Installation
- Interior or Exterior Applications

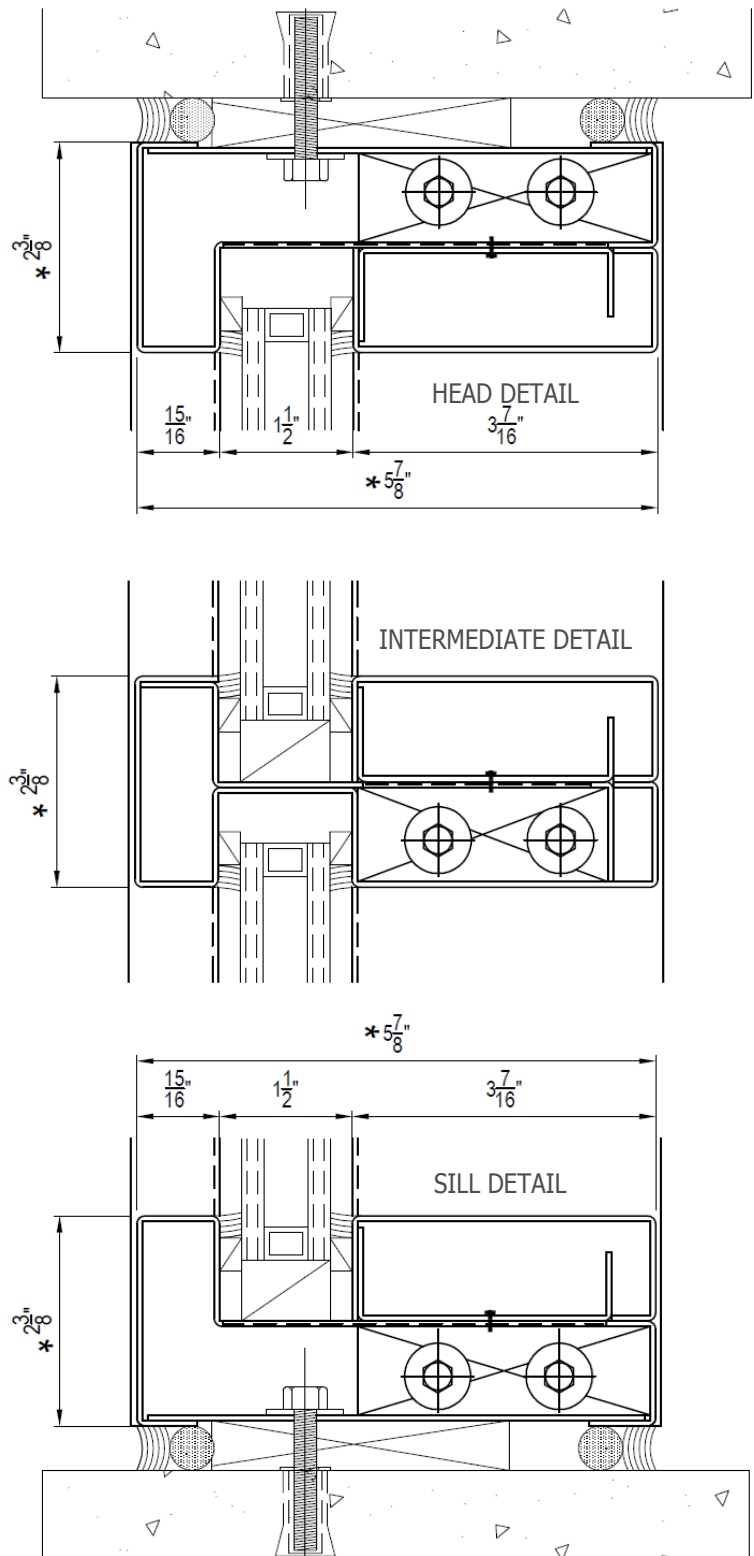
## Glass

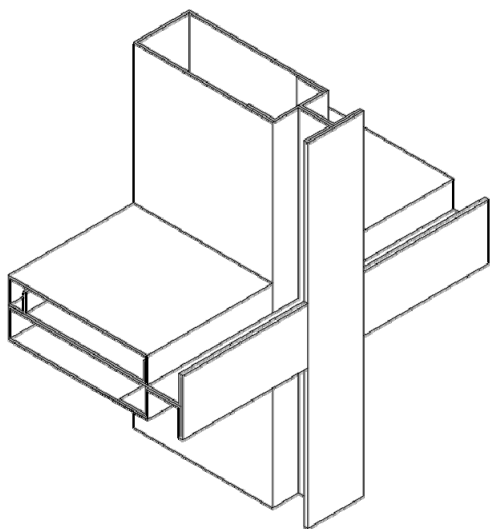
- Allowance for 1/4" to 1" Glass

## Finishing

- Factory Finishing Available

For complete details and specifications, please consult online catalog at: [www.stilesdoor.com](http://www.stilesdoor.com)





## Features

- L O N G Span Capability
- Integrated Structural Members
- Cold Rolled, A60, Stainless or Bronze
- Modular Design
- Narrow Sight Lines
- FAST Installation
- Interior or Exterior Applications

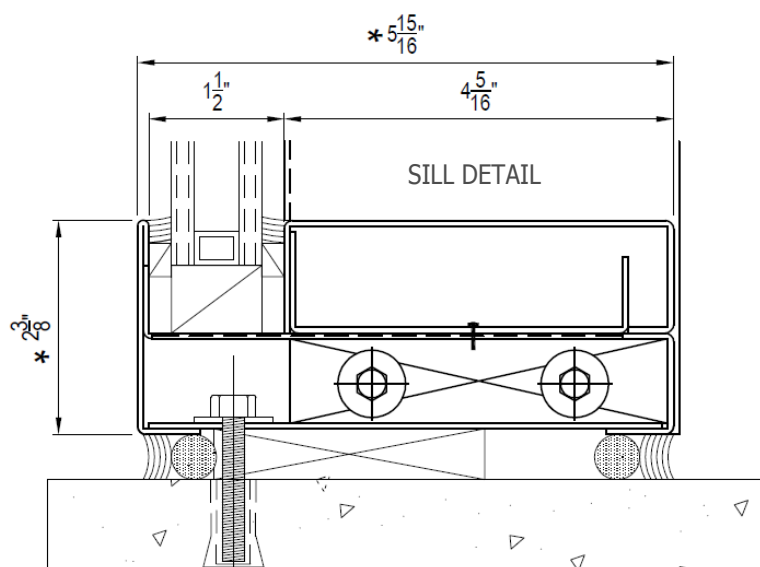
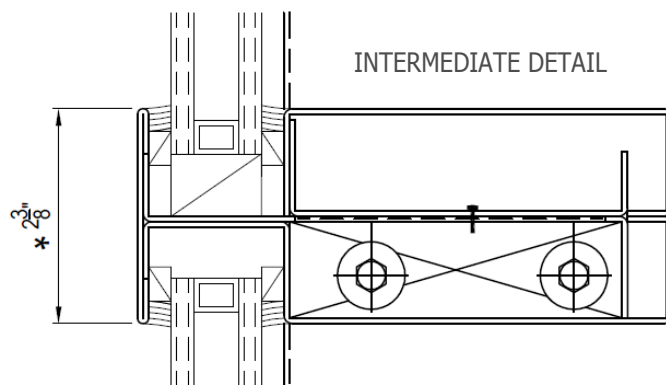
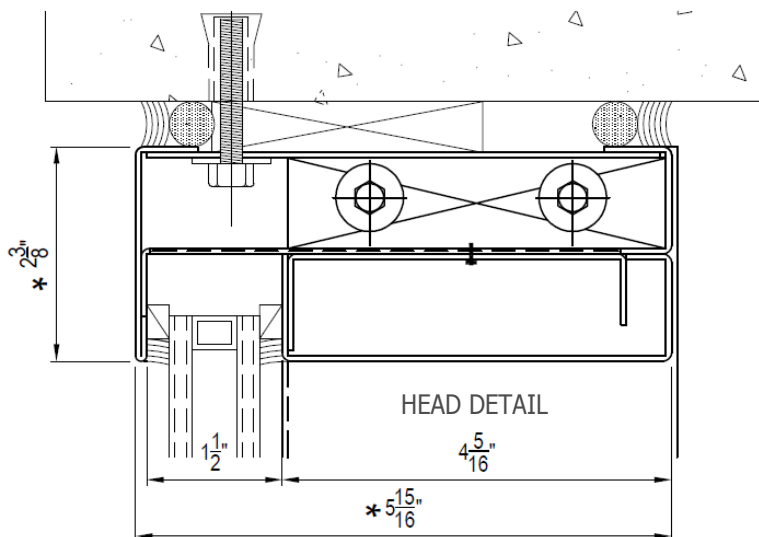
## Glass

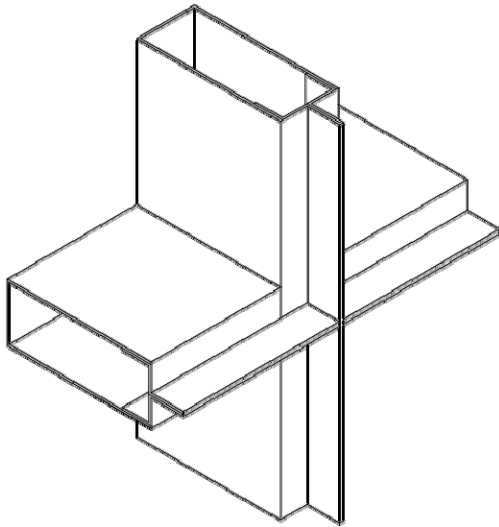
- Allowance for 1/4" to 1" Glass

## Finishing

- Factory Finishing Available

For complete details and specifications, please consult online catalog at: [www.stilesdoor.com](http://www.stilesdoor.com)





## Features

- L O N G Span Capability
- Integrated Structural Members
- Cold Rolled, A60, Stainless or Bronze
- Modular Design
- Narrow Sight Lines
- FAST Installation
- Interior or Exterior Applications

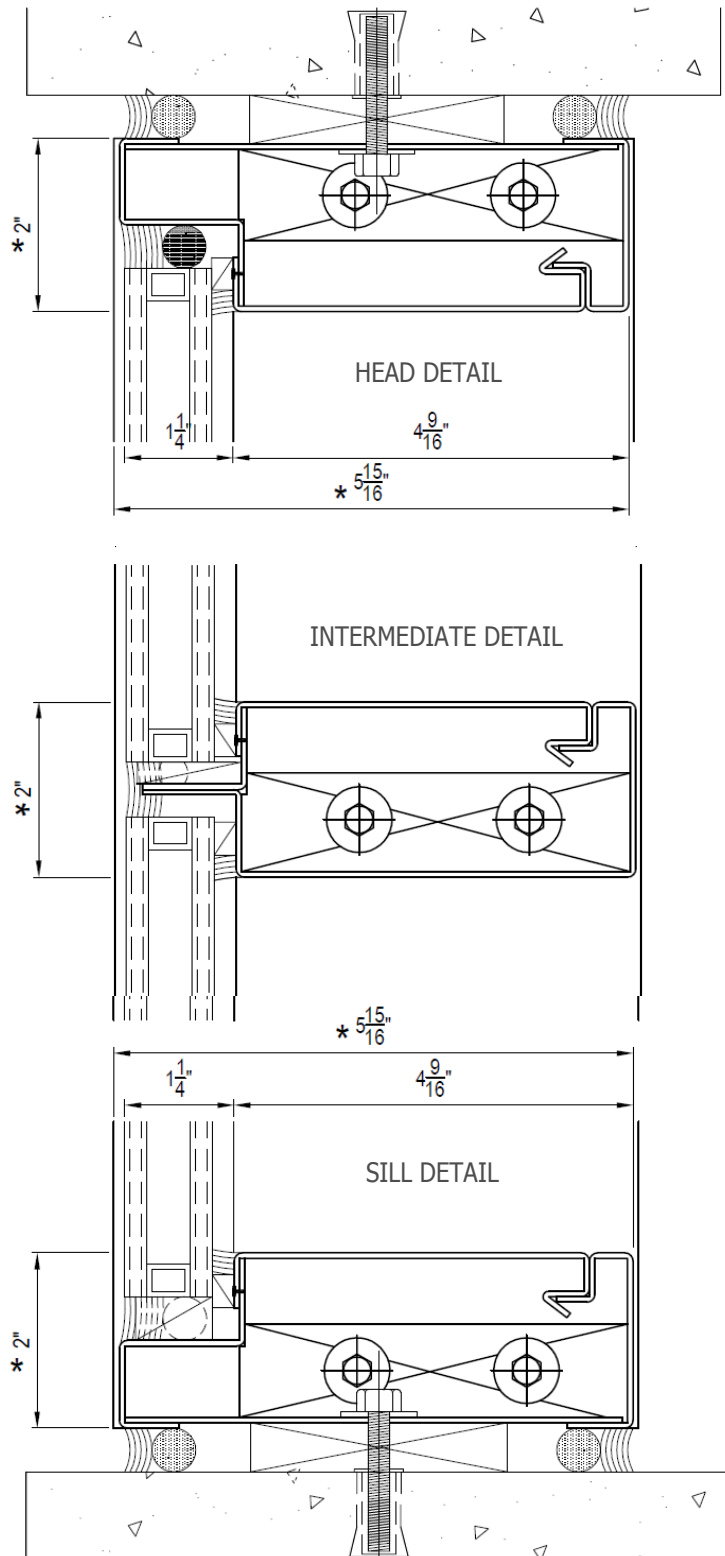
## Glass

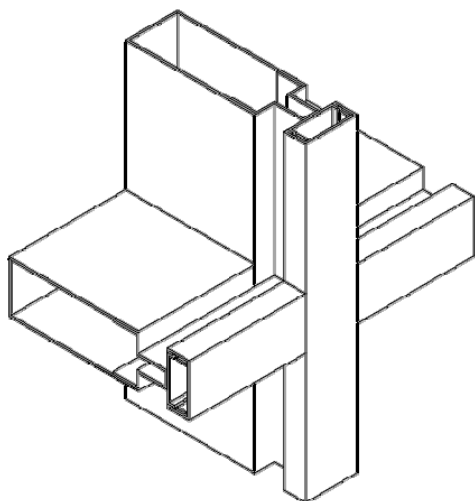
- Allowance for 1/4" to 1" Glass

## Finishing

- Factory Finishing Available

For complete details and specifications, please consult  
online catalog at: [www.stilesdoor.com](http://www.stilesdoor.com)





## Features

- L O N G Span Capability
- Integrated Structural Members
- Cold Rolled, A60, Stainless or Bronze
- Modular Design
- Narrow Sight Lines
- FAST Installation
- Interior or Exterior Applications

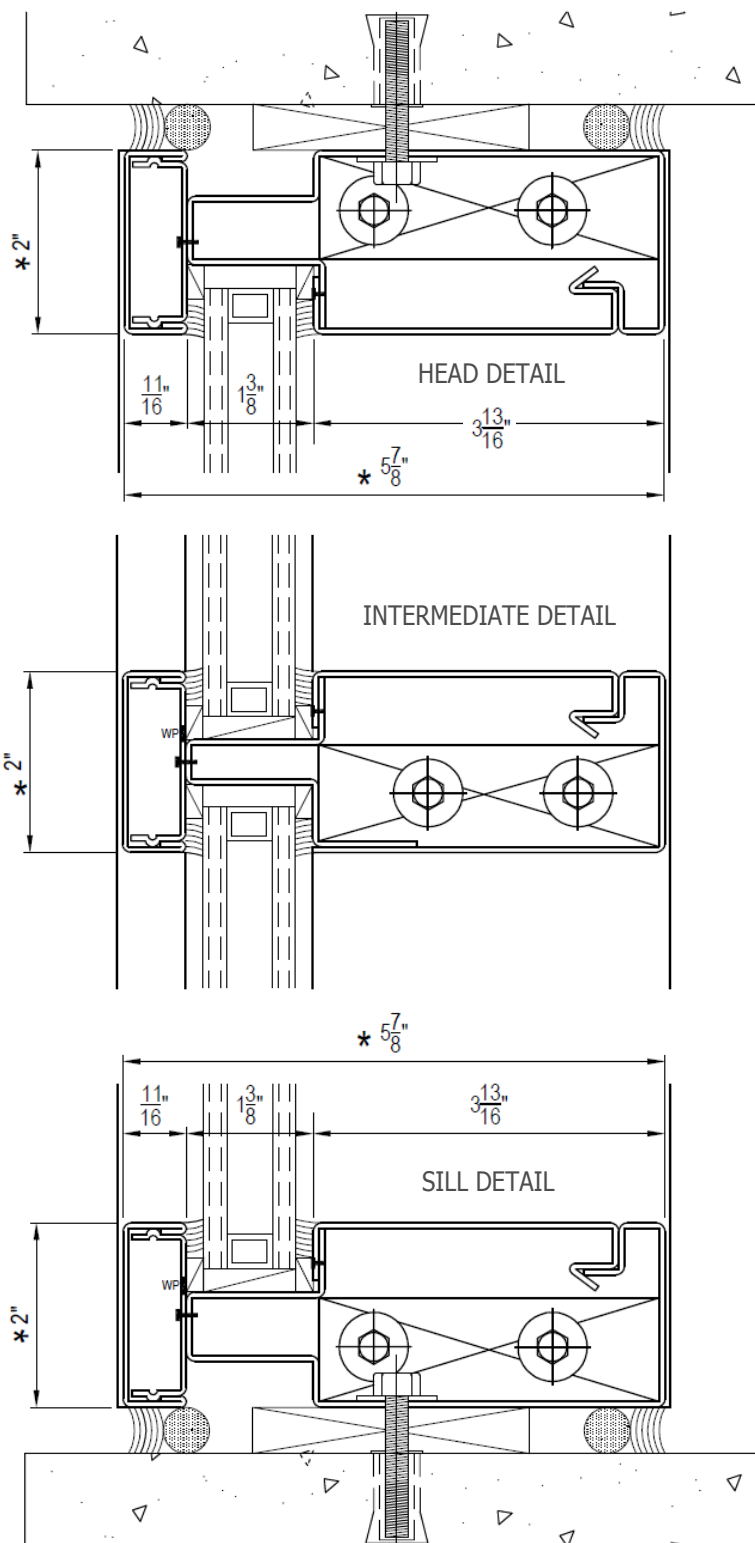
## Glass

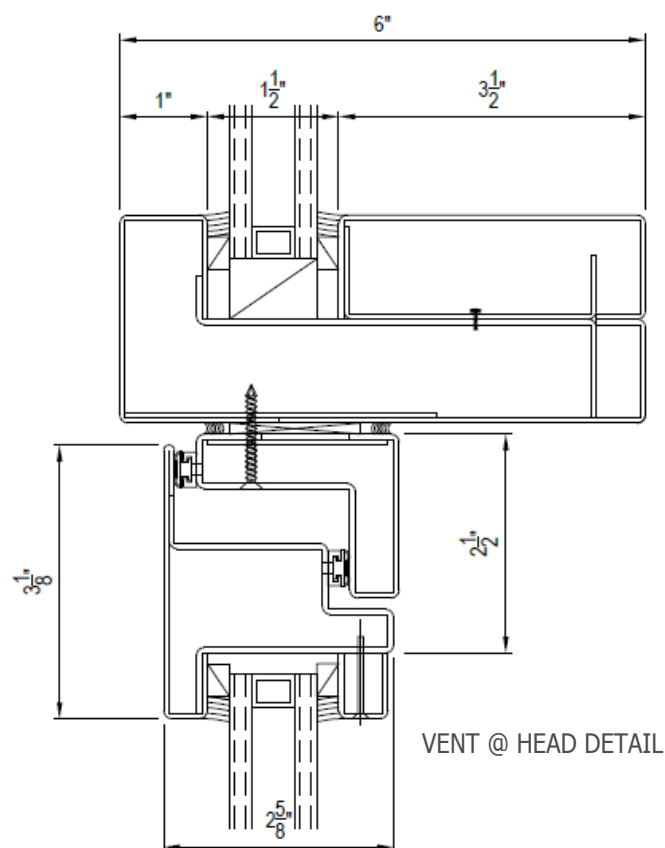
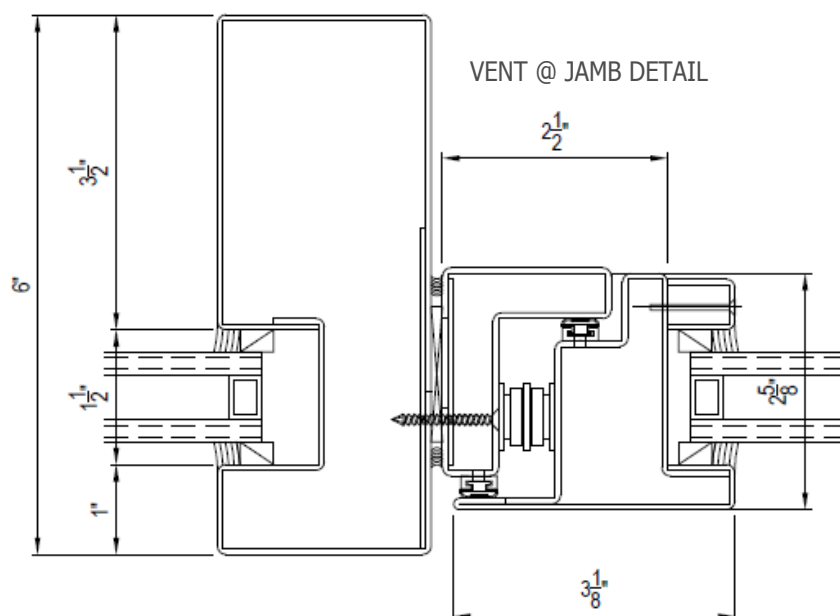
- Allowance for 1/4" to 1" Glass

## Finishing

- Factory Finishing Available

For complete details and specifications, please consult online catalog at: [www.stilesdoor.com](http://www.stilesdoor.com)





## Features

- Easy Integration into StileLine Systems
- Continuous Welded Construction
- Cold Rolled, A60, Stainless or Bronze
- Proprietary Weather-seal System
- Narrow Sight Lines
- Awnings, Hoppers, and Casements
- Corrosion-resistant Hardware

## Glass

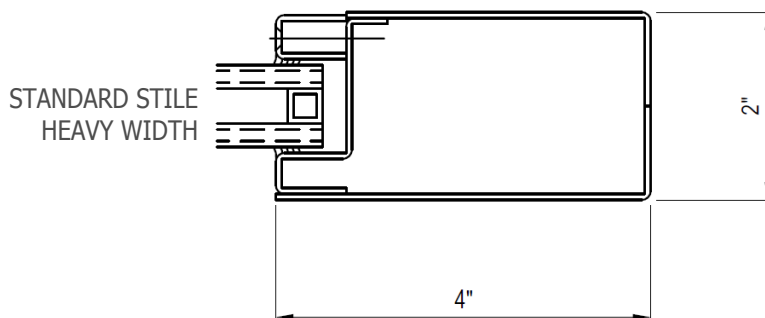
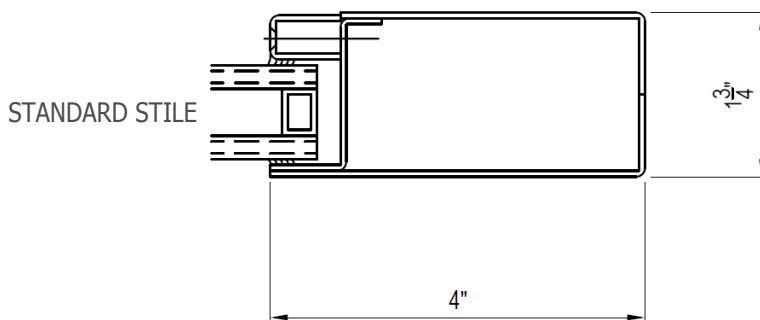
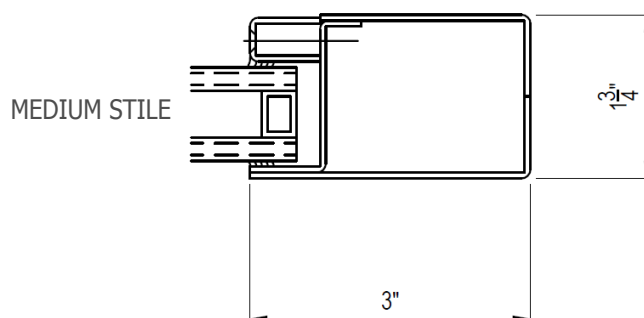
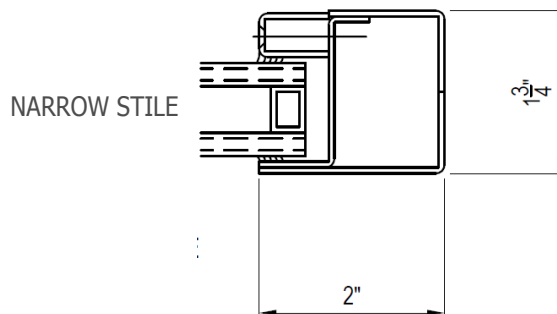
- Allowance for 1/4" to 1" Glass

## Finishing

- Factory Finishing Available

For complete details and specifications, please consult online catalog at: [www.stilesdoor.com](http://www.stilesdoor.com)



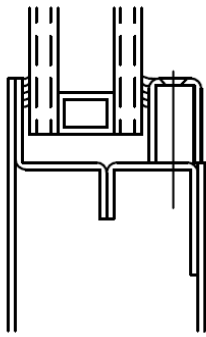


## Features

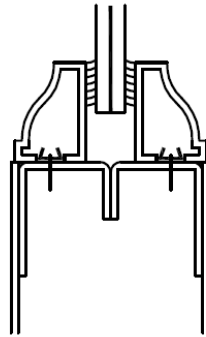
- StileLine entrance doors available in Cold Rolled, A60 Galvanized, Stainless Steel and Bronze (Alloy 464 Naval Brass)
- Seamless construction, 3-4 times stronger than aluminum doors
- Narrow sight lines (special stile and rail sizes available)
- Proprietary Air-Tek door edge weather-seal available.
- Glazing allowance for 1/4" to 1" glass thicknesses
- Factory finishing available,  
See [Finish Options, General Section](#)

For complete details and specifications, please consult online catalog at: [www.stilesdoor.com](http://www.stilesdoor.com)

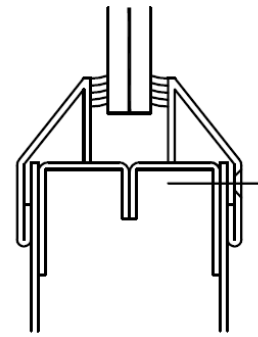




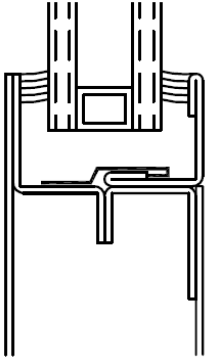
1" IG  
WITH SCREW-ON STOP



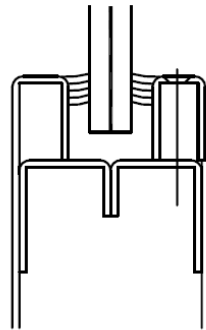
1/4" SINGLE-GLAZED WITH  
DECORATIVE STOPS



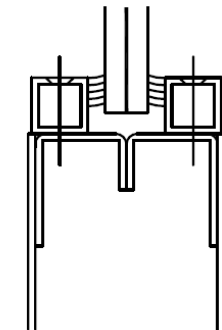
SINGLE-GLAZED WITH  
SLOPED VISION FRAME



1" IG  
WITH SNAP-ON STOP

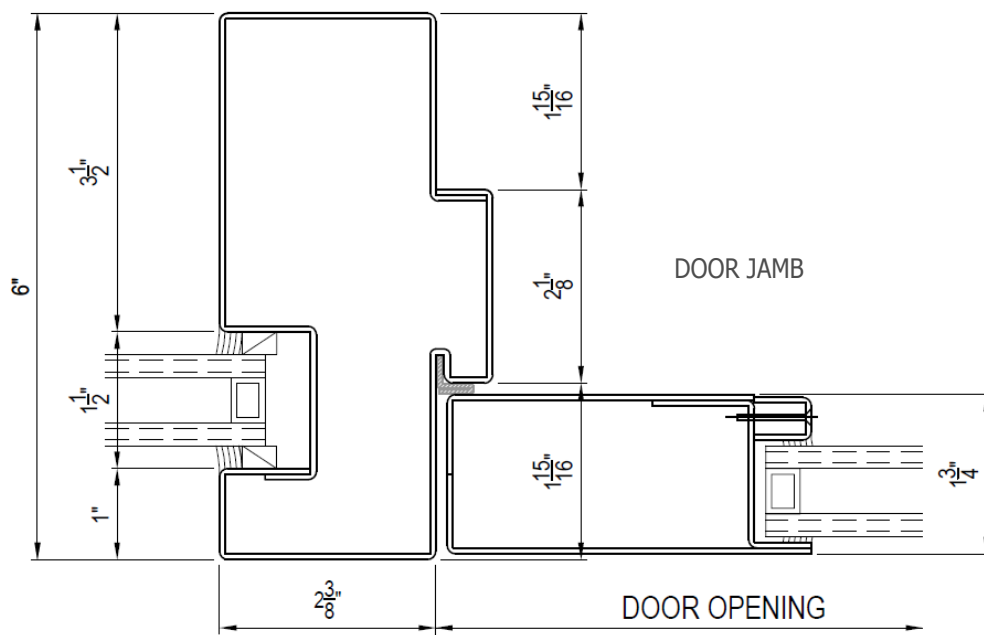


STANDARD GLASS WITH  
SCREW-ON STOP



STANDARD GLASS WITH  
TUBE STOPS

For complete details and specifications, please consult online catalog at: [www.stilesdoor.com](http://www.stilesdoor.com)



## Features

■ StileLine entrance systems available in Cold Rolled, A60 Galvanized, Stainless Steel and Bronze (Alloy 464 Naval Brass)

■ Integrated kerf weather-seal system

■ Narrow sight lines (special stile and rail sizes available)

■ Proprietary Air-Tek door edge weather-seal available.

■ Glazing allowance for 1/4" to 1" glass thicknesses

■ Factory finishing available,  
See [Finish Options, General Section](#)

For complete details and specifications, please consult online catalog at: [www.stilesdoor.com](http://www.stilesdoor.com)

